

Welcome to the West Area Planning Committee

- This planning committee meeting is held in public but it is not a public meeting.
- There will be an opportunity for the public to address the committee on each application.
- If you wish to speak for or against a planning application, you need to have either requested it in advance, or hand in one of the available speaker forms, or speak to the clerk.
- Information on meeting protocol and conduct at the committee is set out in the Code of Practice.
- This is in the committee agenda just before the first planning application report.



Location Plan

54



www.oxford.gov.uk



Front Elevation

55



www.oxford.gov.uk



**OXFORD
CITY
COUNCIL**



Rear Elevation

56



www.oxford.gov.uk



Boundary with 8 Farndon Road



www.oxford.gov.uk



Rear Garden



58

www.oxford.gov.uk



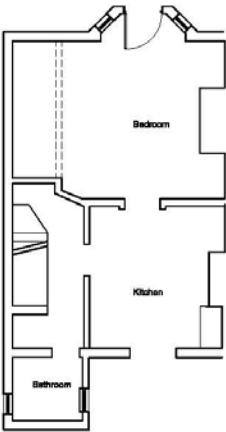
Existing Basement and Ground Floor Plan

www.oxford.gov.uk

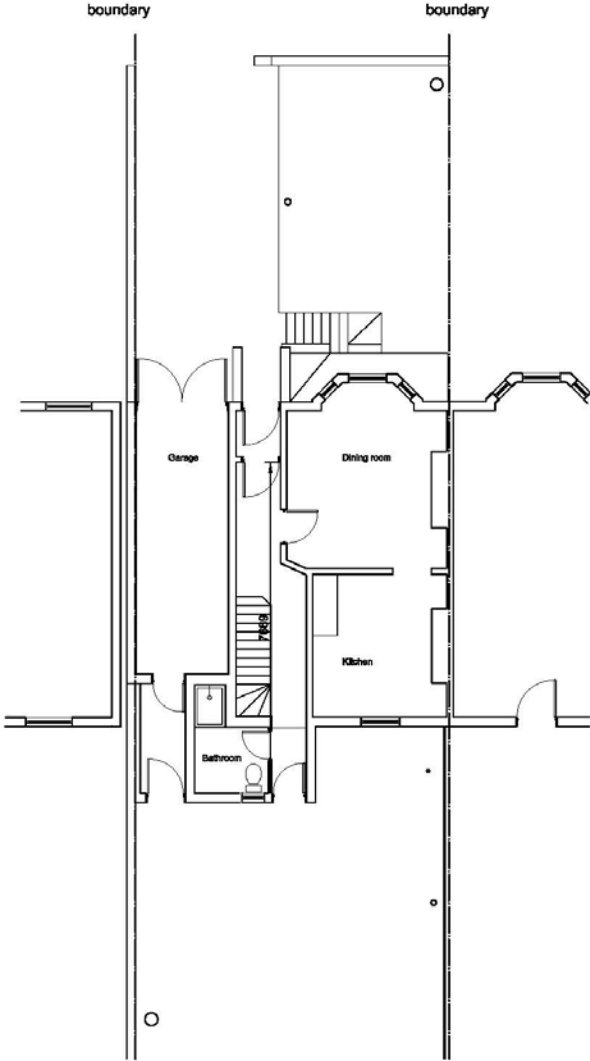


**OXFORD
CITY
COUNCIL**

59



Basement Floor Plan



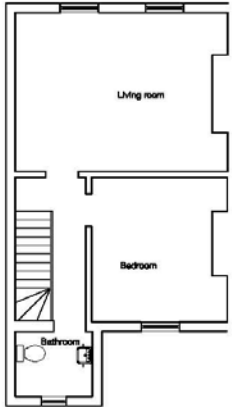
Ground Floor Plan



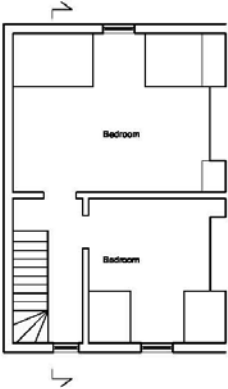
Existing First and Second Floor Plans

Existing Section

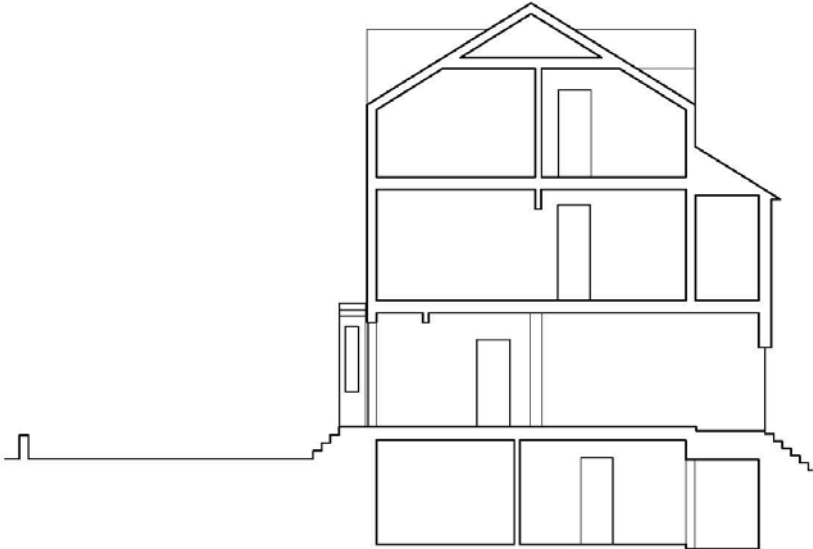
09



First Floor Plan



Second Floor Plan



Section through entrance



Existing Front and Rear Elevations



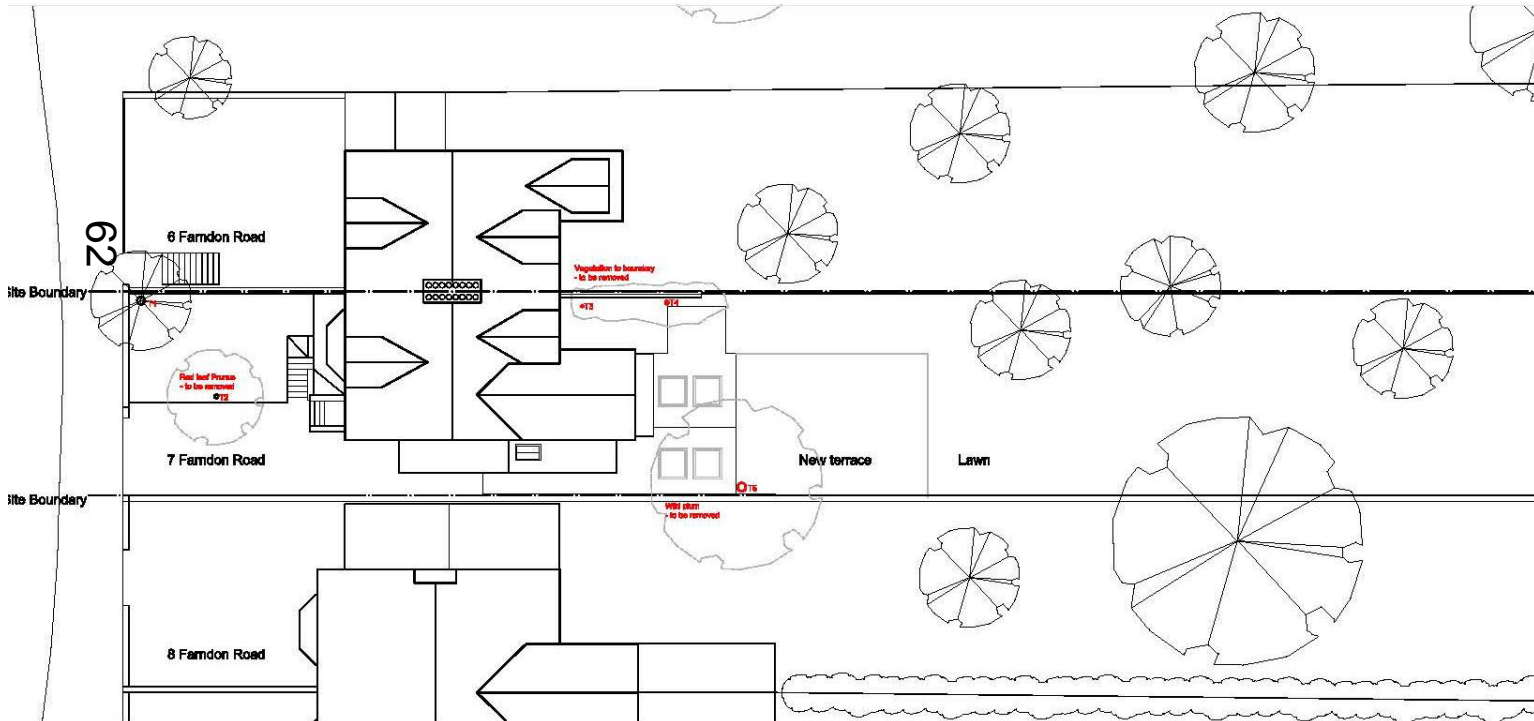
www.oxford.gov.uk



Proposed Site Plan

1295-101-A

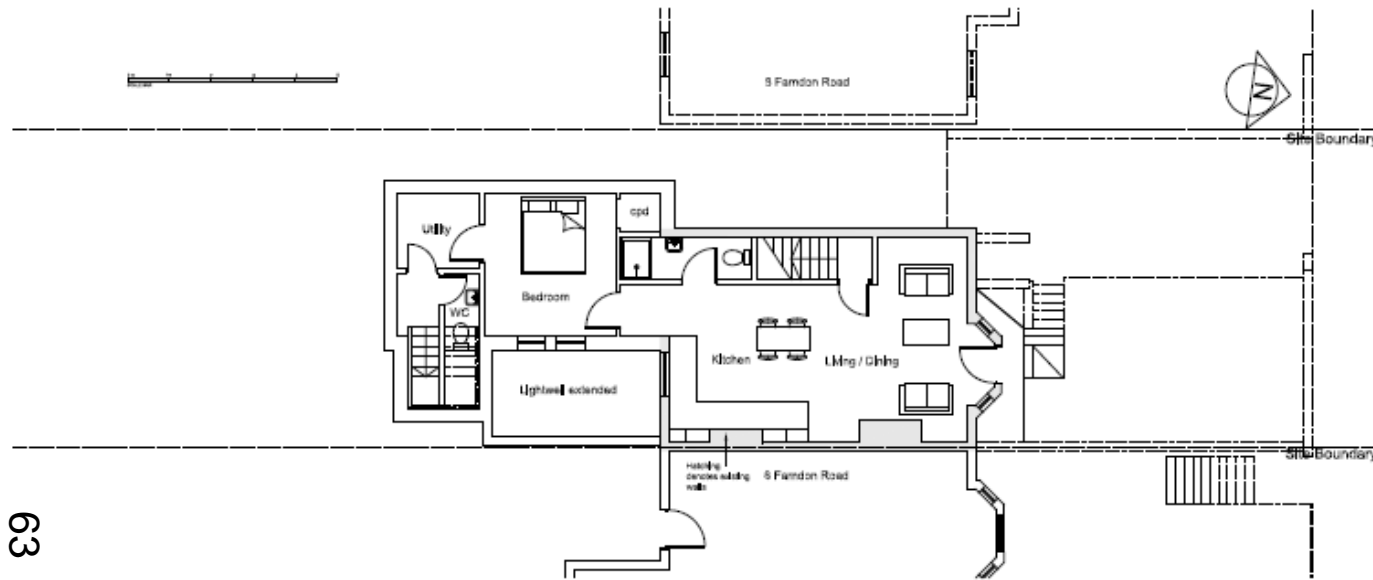
www.oxford.gov.uk



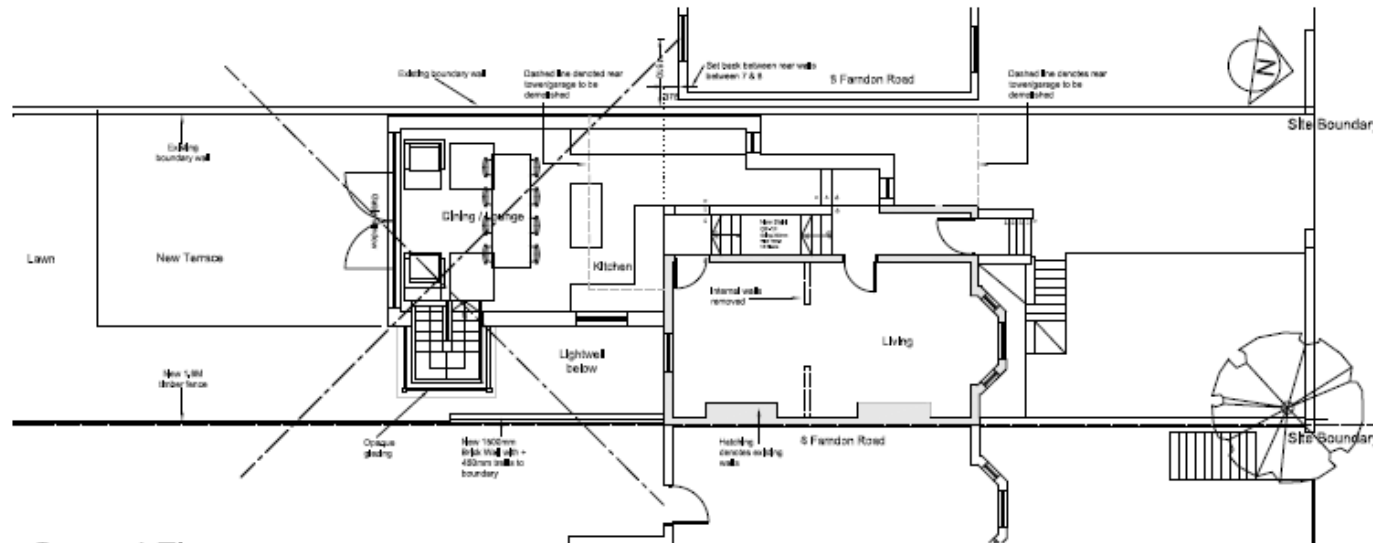
Proposed Basement & Ground Floor

1295-102-A

www.oxford.gov.uk



Basement

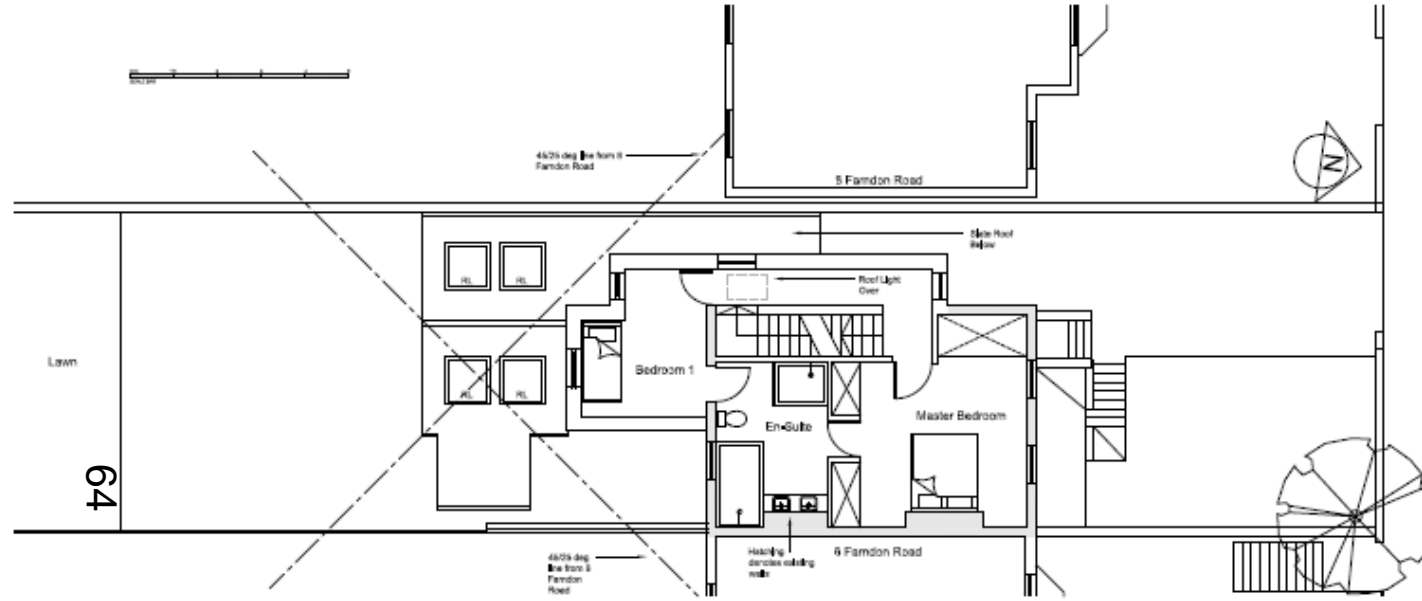


Ground Floor

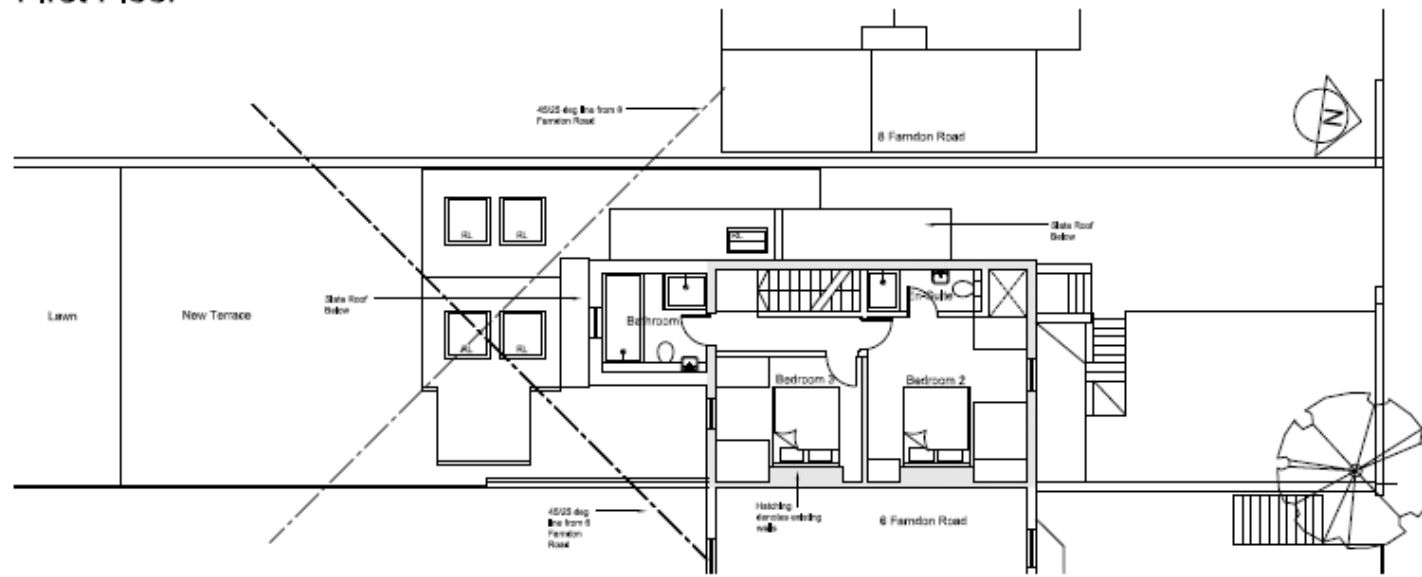


Proposed First & Second Floor 1295-103-A

www.oxford.gov.uk



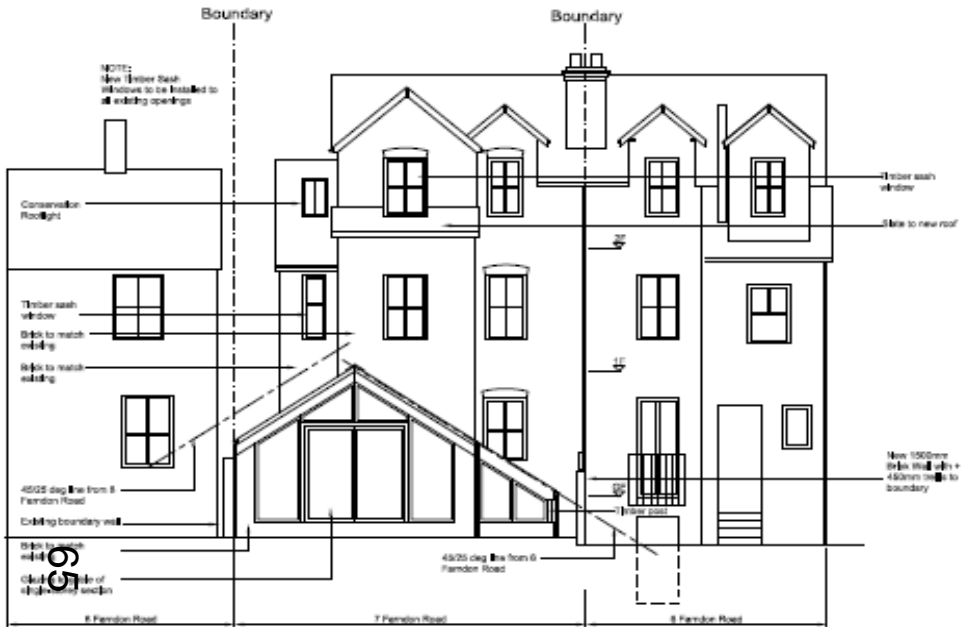
First Floor



Second Floor



Proposed Rear & Side East Elevation 1295-104-A



Rear Elevation



Side-East Elevation

www.oxford.gov.uk



Proposed Front & Side West Elevation

1295-105-A

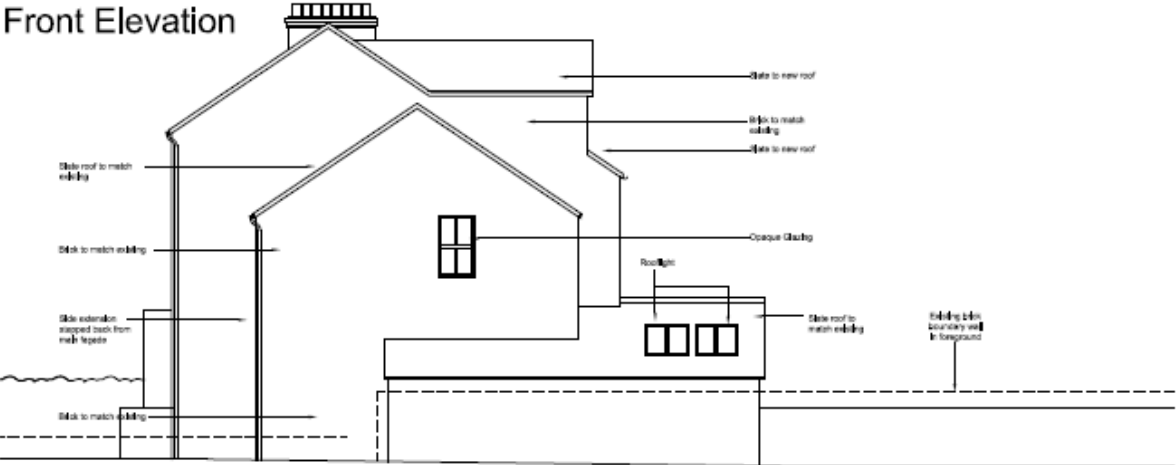
www.oxford.gov.uk



OXFORD
CITY
COUNCIL



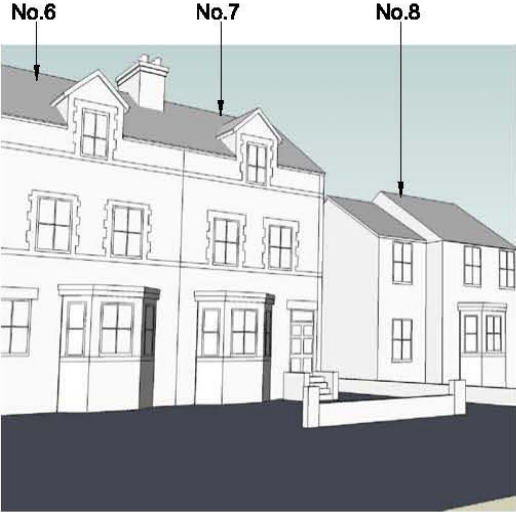
Front Elevation



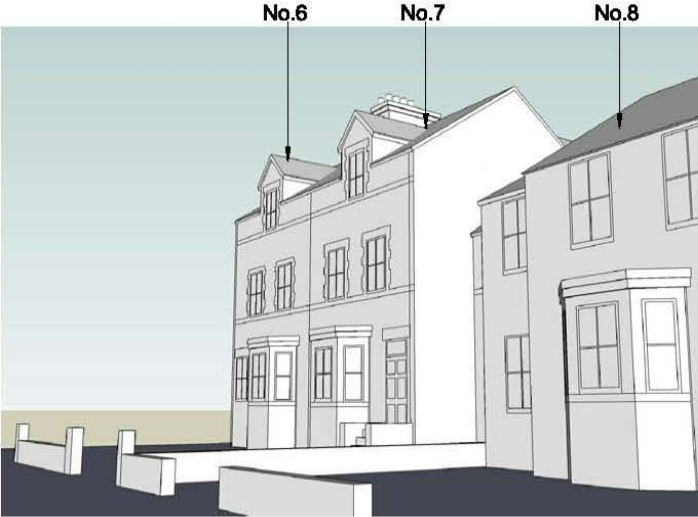
Side-West Elevation



Proposed Views



67



Existing Front Elevation



This page is intentionally left blank